

Lista de Precios a Publico



**Accesorios, Refacciones
y Especificaciones**

**ventas@ultravioletapurificacion.com
(777) 231-9608 / (777) 380-1000**

Precios en Dólares, No Incluyen I.V.A. L.A.B. Cuernavaca, Morelos, Mexico



www.ultravioletapurificacion.com

Sistema High Flow Utilizados por McDonalds-Burger King



No. de parte	Modelo	Precio USD
Sistema Completo		
EV9347-10	Sistema HR CSR Plus XC	\$ 2,215.73
Cartuchos de reemplazo		
EV9534-20 (26)	EC210	\$ 11.27
EV9612-55 (05)	MC	\$ 90.38
EV9799-32	SS-IMF	\$ 70.15
En algunas tiendas, utilizan el Cartucho XC EV9613-97, el cual le da 33% más vida util.		\$ 112.76



Sistema Completo
EV9347-10
PRECIO ESPECIAL
\$ 442.97
Sólo pague los cartuchos y el cabezal (Manifold) va por cuenta de **EVERPURE**

Sistemas utilizados por Starbucks



Cuando el agua de entrada está dentro de las especificaciones de Starbucks

No. de parte	Modelo	Precio USD
Sistema Completo		
EV9328-06	Sistema HF CSR Triple MC	\$ 1,206.30
Cartuchos de reemplazo		
EV9534-20	EC210	\$ 11.27
EV9612-55	MC	\$ 90.38
EV9799-32	SS-IMF	\$ 70.15
Los Cartucho de reemplazo son los mismos que utilizan McDonalds/B. King		



Sistema Completo
EV9328-06
PRECIO ESPECIAL
\$ 352.59
Sólo pague los cartuchos y el cabezal (Manifold) va por cuenta de **EVERPURE**

Cuando el agua de entrada está fuera de las especificaciones de Starbucks

No. de parte	Modelo	Precio USD
Sistema Completo		
EV9970-02	Sistema MRS-400, 115 VAC	\$ 4.112.89
Cartuchos de reemplazo		
EV9627-04	7-TO	\$ 121.70
EV9627-03	MRS-225 GPA RO	\$ 484.13
EV9612-55	MC	\$ 90.38



Tips para Atender a McDonalds/Burger King



1. Si están con la competencia, puede ofrecer el manifold sin costo
 1. Así no hay inversión por parte del cliente, sino solo un cambio de filtros.
2. Ofrezcer el programa auto-ship, dándole el XC en lugar del MC por el mismo precio
 2. Esto permite que se le facture según su programación de cambio de filtros, sin esperar una orden de compra.





Sistemas para Atender a Starbucks

1. Donde el agua de entrada está dentro de la norma de Starbucks
 1. Ofrezcer el manifold sin costo del High Flow Triple
 - Menos mantenimiento porque no es osmosis
 - Filtros más baratos
2. Si tiene que ser osmosis
 - Ofrezcer una alternativa de Everpure al SBX-400 por el **EV997020, el MRS-350BL \$ 2,138.78**
 - No se pueden manipular las válvulas
 - Viene con bomba incorporada



Especificación del Agua de Starbucks y Coca-Cola

Parametros Físicoquímicas	Norma Máxima 	Norma Máxima 	NOM127-SSA1-1994 Consumo Humano
Alcalinidad Total	< 100 ppm	150 ppm	*N/A
Dureza Total	17 a 85 ppm	100 ppm	500 ppm
Cloruros Totales	*N/A	250 ppm	250 ppm
Sulfatos Totales	*N/A	250 ppm	400 ppm
Sólidos Totales Disueltos (TDS)	70 a 200 ppm	500 ppm	1000 ppm
Turbidez	*N/A	0.5 NTU's	0.5 NTU's
Fierro	< 0.25 ppm	0.3 ppm	0.3 ppm
Cloro Total	Cero	0.5 ppm	*N/A
Cloro Libre	Cero	0.5 ppm	0.2-1.50 ppm
pH	6.8 a 7.4	6.5 - 8.5	6.5 - 8.5
Olor / Sabor	*N/A	Característico	Inodoro / Insipido
Microbiológicas			
Mesofílicos Aerobios	Máx. 500 UFC / 1 ml	Máx. 500 UFC / 1 ml	*NP
Coliformes Totales	Cero UFC /100 ml	Cero UFC /100 ml	Cero UFC /100 ml

*N/A= No Aplica
*NP= No Público

Lista de Precios

Productos Foodservice



*Los artículos resaltados son usados por: C=Coca-Cola P=pepsi

No. Parte	Descripción	Precio Lista USD
DEV910010	CGS-10 SYSTEM	\$ 135.13
DEV910012	CGS-12 SYSTEM	\$ 221.03
DEV910020	CGS-20 SYSTEM	\$ 200.45
DEV910022	CGS-22 SYSTEM	\$ 364.21
DEV910023	CGS-23 PARALLEL PLUMBED HSG.	\$ 350.79
DEV910050	CGS-55 SYSTEM	\$ 480.55
DEV910541	SO-10 CARTRIDGE, 6PK	\$ 32.03
DEV910542	SO-20 CARTRIDGE, 6PK	\$ 50.38
DEV910545	SO-204 CARTRIDGE, 4PK	\$ 110.06
DEV910813	CGT-10S CARTRIDGE, 12PK	\$ 24.15
DEV910825	CG5-20 CARTRIDGE, 6PK	\$ 34.98
DEV910827	CG5-20S CARTRIDGE, 6PK	\$ 45.01
DEV910832	CGT-20 CARTRIDGE, 6PK	\$ 30.73
DEV910857	CG53-10S CARTRIDGE, 12PK	\$ 27.73
DEV910863	CG53-20 CARTRIDGE, 6PK	\$ 43.13
DEV910867	CG53-20S CARTRIDGE, 6PK	\$ 53.34
EV910002	A-11 FILTER HOUSING, 1PK	\$ 44.11
EV910003	A-20 FILTER HOUSING, 1PK	\$ 66.94
EV910006	IN-10 INLINE W/FTG, 6PK	\$ 31.40
EV910007	IN-12 INLINE W/O FTG, 6PK	\$ 31.40
EV910024	202 PARALLEL PREFILTER SYSTEM, 1PK	\$ 944.10
EV910031	CB20-124E, SINGLE BB PRE-FILTER, 1PK	\$ 260.40
EV910037	CB20-312E (3 BOWL/SER/PAR) SYSTEM, 1PK	\$ 1,600.05



DEV9105-41, DEV9105-42,
DEV9105-45,
*Productos en orden de lista;
sin escala



CGT-10 DEV9108-11 CG5-10 DEV9108-53
CG53-10
DEV9108-15



DEV9100-10
CGS-10 Single



DEV9100-22
CGS-22 Dual Series



DEV9100-50
CGS-55 Single Series



EV9100-37
CB20-312E



DEV9100-12
CGS-12 Dual Series

Lista de Precios

Productos Foodservice



No. Parte	Descripción	Precio Lista USD
EV910051	CB20-124E CHLORAMINE SYSTEM, 1PK	\$ 509.19
EV910067	IN-6 PG-S INLINE, 6PK	\$ 24.25
EV910068	IN-10 CK INLINE, 6PK	\$ 25.86
EV910069	IN-10 CS INLINE, 6PK	\$ 15.96
EV910070	CB20-312E HOUSING, 1PK	\$ 985.27
EV910071	IN-10 CC INLINE, 6PK	\$ 25.86
EV910072	IN-10 NS5 INLINE, 6PK	\$ 21.03
EV910073	IN-10 CL1 INLINE, 6PK	\$ 41.07
EV910076	IN-15 CF INLINE, 6PK	\$ 44.56
EV910077	IN-15 CF-S INLINE, 6PK	\$ 52.44
EV910078	IN-15 CR INLINE, 6PK	\$ 51.12
EV910079	IN-10 UV INLINE, 12PK	\$ 196.87
EV910086	IN-12 INLINE W/FTG, 6PK	\$ 37.22
EV910091	HFC-10 SYSTEM, 1PK	\$ 190.61
EV910094	SO-24 SOFTENER SYSTEM, 1PK	\$ 249.67
EV910124	CGS-22-C5S SYSTEM, 1PK	\$ 485.92
EV910502	CC1E REPLACEMENT CARTRIDGE, 1PK	\$ 278.30
EV910521	CC1E CC3E 302 CARTRIDGE KIT	\$ 553.93
EV910585	PCC 316 CARTRIDGE, IND BOX 6/C	\$ 52.26
EV910700	QCP 10-L CARTRIDGE, 12PK	\$ 50.73
EV910701	QCP 10-GAC CARTRIDGE, 12PK	\$ 48.95
EV910702	QCP 10-SED5 CARTRIDGE, 12PK	\$ 52.53
EV910703	QCP 10-TSGAC CARTRIDGE, 12PK	\$ 47.15
EV910721	QCP SINGLE HEAD, AUTO-SHUTOFF, 48PK	\$ 27.70
EV910722	QCP TWIN SERIES HEAD, AUTO SO, 24PK	\$ 57.00
EV910723	QCP TRIPLE SERIES HEAD, AUTO SO, 16PK	\$ 81.88
EV925617	QL1 HEAD, 24PK	\$ 42.95
EV925618	QL1 HEAD W/ 3/8" NPT, 24PK	\$ 41.07
EV925914	QL3 HO-P W/BRKT MTD, 12PK	\$ 79.82
EV927200	QL3-BH(2) FILTER SYSTEM, 1PK	\$ 157.50
EV927218	QL2 HEAD W/BRKT, 12PK	\$ 49.89
EV927222	QC7I TWIN HEAD ONLY, 1PK	\$ 432.22
EV927223	QC7I TRIP HEAD ONLY, 1PK	\$ 613.89



QCP3EV9107-23
QCP3TripleSeriesHead



QCP1EV9107-21
QCP1Single
Head



QCP2EV9107-22
QCP2TwinSeries
Head



EV9259-24
QL3B Single Head

Lista de Precios

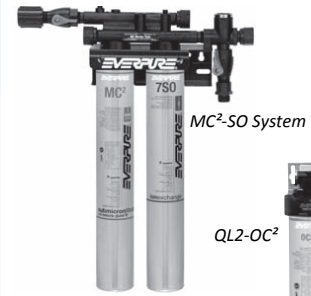
Productos Foodservice



*Los artículos resaltados, son los que normalmente tenemos en inventario

*Los artículos resaltados son usados por: C=Coca-Cola P=pepsi

No. Parte	Descripción	Precio Lista USD
EV927224	TWIN SERIES HEAD, 1PK	\$ 221.93
EV927241	QC7I SINGLE HD ONLY, 1PK	\$ 245.20
EV927369	MRS-20 MINERAL REDUCTION CARTRIDGE	\$ 205.82
EV927501	QC7I-MC(2) SYSTEM SINGLE, 1PK	\$ 317.68
EV927502	QC7I-MC(2) SYSTEM TWIN, 1PK	\$ 571.82
EV927503	QC7I-MC(2) SYSTEM TRIPLE, 1PK	\$ 831.35
EV927560	QL2-OCS FILTER SYSTEM, 1PK	\$ 109.18
EV927570	QL2-OW 200L FILTER SYSTEM, 1PK	\$ 171.81
EV932401	INSURICE SINGLE - I2000(2), 1PK	\$ 334.69
EV932402	INSURICE TWIN - I2000(2), 1PK	\$ 579.88
EV932421	INSURICE SINGLE PF-I2000(2), 1PK	\$ 527.98
EV932422	INSURICE TWIN PF-I2000(2), 1PK	\$ 703.02
EV932503	INSURICE TRIPLE - I4000(2), 1PK	\$ 929.78
EV932504	INSURICE QUAD - I4000(2), 1PK	\$ 1,265.37
EV932523	INSURICE TRIPLE PF-I4000(2), 1PK	\$ 1,109.65
EV932801	COLDRINK SYSTEM 1 MC(2), 1PK	\$ 519.93
EV932802	COLDRINK SYSTEM 2 MC(2), 1PK	\$ 767.81
EV932803	COLDRINK SYS. 3 MC(2) W/20" PREFLT, 1PK	\$ 1,053.28
EV932805	H/F CSR TRIPLE MC(2) W/ LPA, 1PK	\$ 1,402.28
* EV932806	H/F CSR TRIPLE MC(2) W/O LPA, 1PK	\$ 1,206.30
EV932823	COLDRINK 3 MC(2) W/10" PREFLT, 1PK	\$ 836.71
EV933042	CSR TWIN MC(2) SYSTEM, 1PK	\$ 1,021.96
EV933043	TRIPLE CSR MC(2) W/ 10" PREFILTER, 1PK	\$ 1,326.22
EV933611	QC7I QUAD HEADER ONLY, 1PK	\$ 874.30
EV933650	SURGE TANK RETROFIT KIT	\$ 576.30
EV933651	SURGE TANK RETROFIT KIT - LARGE	\$ 803.61
EV933652	SURGE TANK KIT - LARGE W/ PREFILTER	\$ 1,618.85
EV933722	DUAL H/F COLDRINK M-XC(2), 8 OUTLETS, 1PK	\$ 3,884.70
EV933726	H/F CSR QUAD UNIMOUNT, 1PK	\$ 1,734.29
EV933744	DUAL H/F COLDRINK S-MC(2), ONE OUTLET, 1PK	\$ 3,662.77
EV934400	HSD 440 PREFILTER 120V	\$ 3,990.29
EV934410	HSD 440P PREFILTER, 230V, EU	\$ 3,990.29
EV934415	HSD 440P PREFILTER, 230V, AU	\$ 3,990.29
* EV934710	H/F CSR PLUS XC(2), 2 SR-X, W/O LPA	\$ 2,215.73
EV934720	H/F CSR PLUS XC(2), 1 SR-X, W/O LPA	\$ 1,902.53
EV943710	H/F CSR QUAD MC(2) W/O LPA, 1PK	\$ 1,669.86
(C, P) EV953412	EC110 CARTRIDGE, 12PK	\$ 6.35
EV953416	EC-207 CARTRIDGE, 30PK	\$ 33.46



EV9272-24
Twin Series Head
Combination
Filtration/Softening

EV9275-60
QL2-OCS2



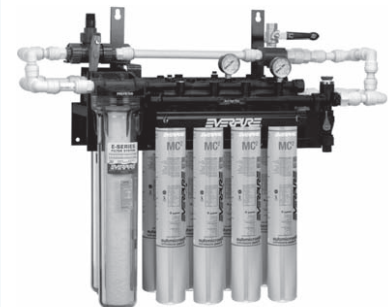
EV9272-24
Twin Series Head;
Series Plumbed



EV9336-11
QC7I Quad Parallel Head



EV932806
H/F CSR TRIPLE MC(2) W/O LPA, 1PK



EV9337-44
Dual High Flow Coldrink S-MC²

Dual High Flow
Coldrink S-MC²

Note:
S= Single outlet
M= 8 outlets

Lista de Precios

Productos Foodservice



*Los artículos resaltados, son los que normalmente tenemos en inventario

No. Parte	Descripción	Precio Lista USD
EV953426	EC210 CARTRIDGE, 6PK	\$ 11.89
EV958801	558-TW CARTRIDGE, 1PK	\$ 149.44
EV958901	358-TW CARTRIDGE, 1PK	\$ 145.86
EV959000	359-PM CARTRIDGE, 12PK	\$ 90.38
EV959006	4C-X CARTRIDGE, 6PK	\$ 54.59
EV959206	ADC CARTRIDGE, 6PK	\$ 56.02
EV960112	AC CARTRIDGE, 6PK	\$ 55.65
EV960146	4DC CARTRIDGE, 6PK	\$ 70.06
EV960700	7-DBG CARTRIDGE, 1PK	\$ 144.07
EV960701	7-DM CARTRIDGE, 1PK	\$ 168.23
EV960702	7-NE CARTRIDGE, 1PK	\$ 145.86
EV960703	7-OF CARTRIDGE, 1PK	\$ 163.76
EV960704	7-SO CARTRIDGE, 1PK	\$ 129.76
EV960705	7-TO CARTRIDGE, 1PK	\$ 121.70
EV960710	ESO 6 EVERPLUS CARTRIDGE, 1PK	\$ 135.91
EV960720	ESO CARTRIDGE, 1PK	\$ 144.07
EV960725	ESO 7 EVERPLUS CARTRIDGE, 1PK	\$ 151.23
EV960741	6 TO BW CARTRIDGE, 1PK	\$ 114.54
EV960746	6 TO BW CARTRIDGE, 6PK	\$ 106.48
EV960756	7-TO CARTRIDGE, 6PK	\$ 136.79
EV960800	4JT SANITIZING CARTRIDGE, 1PK	\$ 74.27
EV960810	2JT SANITIZING CARTRIDGE, 1PK	\$ 74.27
EV961100	4-H CARTRIDGE, 6PK	\$ 83.40
EV961227	I-2000(2) CARTRIDGE, 6 PK	\$ 102.90
EV961251	BH(2) CARTRIDGE, 6 PK	\$ 83.40
* EV961255	MC(2) CARTRIDGE, 6 PK	\$ 90.38
EV961266	2K PLUS CARTRIDGE, 6PK	\$ 71.50
EV961276	4K PLUS CARTRIDGE, 6PK	\$ 88.95
EV961326	MH(2) CARTRIDGE, 6 PK	\$ 116.34
* EV961397	XC(2) CARTRIDGE, 6 PK	\$ 112.76
EV961406	MCP CARTRIDGE, 6PK	\$ 110.96



ESO 7 (EV9607-25)
QC7I Single ESO 7 System



JT Cartridge
EV9608-10
EV9608-00

2JT Flushing/Sanitizing Cartridge
4JT Flushing/Sanitizing Cartridge



EV9607-41
6TO-BW
MRS-100/100CC/MRS-225/
225CC/COMBI

Lista de Precios

Productos Foodservice



*Los artículos resaltados, son los que normalmente tenemos en inventario

No. Parte	Descripción	Precio Lista USD
EV961705	2CB5 CARTRIDGE, 6PK	\$ 53.06
EV961706	2CB5-K CARTRIDGE, 6PK	\$ 60.13
EV961716	4CB5 CARTRIDGE, 6PK	\$ 73.46
EV961722	2CB5-S CARTRIDGE, 6PK	\$ 57.89
EV961726	4CB5-S CARTRIDGE, 6PK	\$ 79.82
EV961736	4CB5-K CARTRIDGE, 6PK	\$ 85.63
EV961776	7CB5-K CARTRIDGE, 6PK	\$ 118.12
EV961806	OCS CARTRIDGE, 6PK	\$ 58.79
EV961807	OCS(2) CARTRIDGE, 6 PK	\$ 58.79
EV961816	7CB5 CARTRIDGE, 6PK	\$ 95.75
EV961826	7CB5-S CARTRIDGE, 6PK	\$ 104.70
EV961836	2CB-GW CARTRIDGE 6PK	\$ 61.21
EV961906	OW 200L CARTRIDGE, 6PK	\$ 101.12
* EV962703	MRS-200 GPD RO (BW) CARTRIDGE, 1PK	\$ 484.13
* EV962704	7-TO (BW) CARTRIDGE, 1PK	\$ 121.70
* EV962705	7-CC (BW) CARTRIDGE, 1PK	\$ 138.70
EV962707	MRS-350 GPD RO (BW) CARTRIDGE, 1PK	\$ 647.89
EV962711	MRS-100 GPD RO (BW) CARTRIDGE, 1PK	\$ 420.60
EV962713	MRS-600 GPD ENVIRO CARTRIDGE, 1PK	\$ 740.06
EV962714	2SR-BW CARTRIDGE, 1PK	\$ 111.86
EV962715	MRS-600 ENVIRO POST FILTER, GAC, 1PK	\$ 48.77
EV962828	QUAD MC(2) REPL CARTRIDGE KIT	\$ 421.48
EV962829	QUAD XC(2) REPL CARTRIDGE KIT	\$ 503.81
EV963406	OW2-PLUS CARTRIDGE, 6PK	\$ 82.32
EV963506	OW4-PLUS CARTRIDGE, 6PK	\$ 100.22
EV963701	MICROGUARD PRO 2 CARTRIDGE, 6PK	\$ 133.34
EV963702	MICROGUARD PRO 4 CARTRIDGE, 6PK	\$ 150.34
EV965500	4JT (BW) SANITIZING CARTRIDGE, 1PK	\$ 76.32
EV969000	2053 MPC (FOR T-20), 6PK	\$ 52.35
EV971000	2055 ELE & MPC (FOR T-20), 1PK	\$ 354.75
EV975111	EFS 5002-K CARTRIDGE, 6PK	\$ 69.00
EV978110	EFS 8002 CARTRIDGE, 6PK	\$ 71.31
EV978112	EFS 8002-S CARTRIDGE, 6PK	\$ 78.30
EV979580	E-10 PREFILTER 10" W/EC110 CARTRIDGE, 1PK	\$ 96.75
EV979590	E-20 PREFILTER 20" W/EC210 CARTRIDGE, 1PK	\$ 154.81
EV979720	SR-X FEEDER W/ DELIMING KIT, 1PK	\$ 263.98
EV979721	KLEENSTEAM II SINGLE	\$ 898.46
EV979722	KLEENSTEAM II TWIN	\$ 973.63
EV979750	KLEENSTEAM MODEL CT	\$ 632.68
EV979782	SC1011 STEAM COMBI FILTER SYSTEM, 1PK	\$ 435.80
EV979783	SC1012 STEAM COMBI FILTER SYSTEM, 1PK	\$ 479.65



EV9795-80
E-10 10"
Coarse Prefilter



EV9795-90
E-20 20"
Coarse Prefilter



EV9617-22
CarbonBlock

EV9797-50
Kleensteam CT



EV979720
SR-X Scale Inhibitor Feeder
and Deliming



EV979722
KleensteamII Twin

Lista de Precios

Productos Foodservice



*Los artículos resaltados, son los que normalmente tenemos en inventario

No. Parte	Descripción	Precio Lista USD
EV979791	MRS-20 SYSTEM	\$ 1,395.12
EV979831	SCLKLEN 1.75OZ, E/S/F, 96PK	\$ 4.29
EV979833	SCALEKLEEN 7 OZ, E/S/F,I 24PK	\$ 8.86
EV979835	SCALKLEEN 2.2 LB, E/S/F, 4PK	\$ 35.17
EV979845	SR-X FEEDER, 1PK	\$ 232.67
EV979902	SS-10 SCALESTICK 10", 12PK	\$ 83.94
EV979911	KLEENWARE HTS-11 SYSTEM, 1PK	\$ 513.69
EV979922	HT-10 KLEENWARE CARTRIDGE, 6PK	\$ 416.12
EV982010	FAUCET KIT, LONG REACH EVP, 1 PK	\$ 101.12
* EV997002	MRS-400 SYSTEM, 115 VAC	\$ 4,112.89
EV997005	UV SYSTEM S5Q-PA, 5 GPM, 110 VAC	\$ 744.54
EV997006	UV SYSTEM S5Q-PA, 5GPM, 220 VAC	\$ 721.28
EV997007	MRS-100 SYSTEM, 115 VAC	\$ 1,674.32
EV997008	MRS-225 SYSTEM, 115 VAC	\$ 1,732.50
EV997009	MRS-225 SYSTEM W/ CALCITE FEED, 115 VAC	\$ 1,838.10
EV997010	MRS-100 SYSTEM W/ CALCITE FEED, 115 VAC	\$ 1,780.82
EV997017	MRS-350 SYSTEM, 115 VAC	\$ 1,945.48
EV997018	MRS-350 SYSTEM W/ CALCITE FEED, 115 VAC	\$ 2,051.97
* EV997020	MRS-350 SYSTEM W/ FILTER BLEND, 115 VAC	\$ 2,138.78
EV997038	MRS ENVIRO 600 SYSTEM, 115 VAC	\$ 4,180.90
EV997042	TRIPLE MC(2) CARTRIDGE KIT	\$ 336.47



EV9797-91
MRS-20 w/3 gallon storage tank



EV9970-07
MRS-100



EV9970-38
MRS Envi-RO 600 System



EV9970-20
MRS-350 System

Lista de Precios

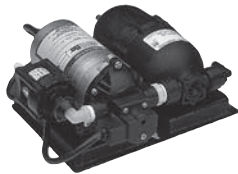
Productos Foodservice



EV997251
MRSCombi

*Los artículos resaltados, son los que normalmente tenemos en inventario

No. Parte	Descripción	Precio Lista USD
EV998010	SOFTENER, WS-30 CABINET, 115 VAC / 60 HZ	\$ 1,910.57
804-002	SHURFLO MINI WATER BOOSTER - 115 VAC	\$ 359.01
804-023	SHURFLO MIDI WATER BOOSTER - 115 VAC	\$ 608.52
804-026	SHURFLO MAXI WATER BOOSTER, 1/2" - 115 VAC	\$ 831.71
* 804-037	SHURFLO MAXI WATER BOOSTER, 3/8" - 115 VAC	\$ 825.39



Mini Water Boost System

Part No. 804-002 (90 psi)

- Automatic pump activations
- Installation platform
- Self priming; can run dry without damage



EV998010/13
Suavizador en Gabinete

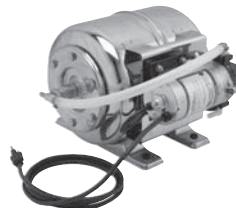


Maxi Water Boost System (90 psi)

Part No. 804-037 (3/8" barb fittings)

Part No. 804-026 (1/2" barb fittings)

- Replaceable bladder design tank
- Automatic pump activations
- 6 gallon (22 liter) S.S. tank provides maximum corrosion resistance
- Self priming; can run dry without damage



Midi Water Boost System

Part No. 804-023 (90 psi)

- Replaceable bladder design tank
- Automatic pump activations
- 2 gallon (7 liter) S.S. tank provides maximum corrosion resistance
- Self priming; can run dry without damage



Bottled Water Delivery System

Part No. 83-001-01

- Self-contained delivery system
- Automatic water level sensor turns pump off when bottle is empty
- Flow rate up to 0.8 GPM (3.0 LPM)
- Flexible dip tube prevents breakage when changing bottle